

# DIAL

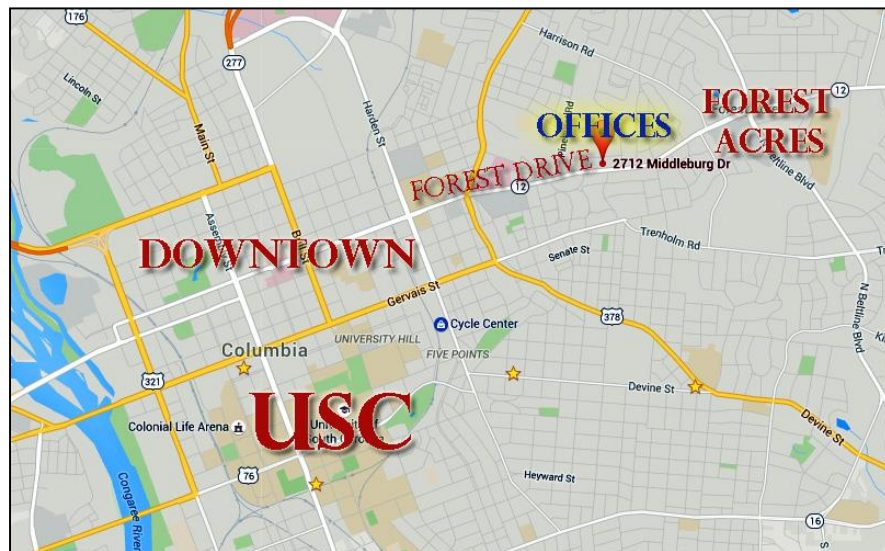
---

REAL ESTATE, LLC

## 2712 Middleburg Dr OFFICES FOR LEASE

907 SF      1,222 SF

1,585 SF    1,730 SF    2,818 SF



Close to Downtown & Highways

Located in Forest Acres

Over 300 parking spaces

On-site management

Convenient to restaurants

For more information contact:

Dial Real Estate

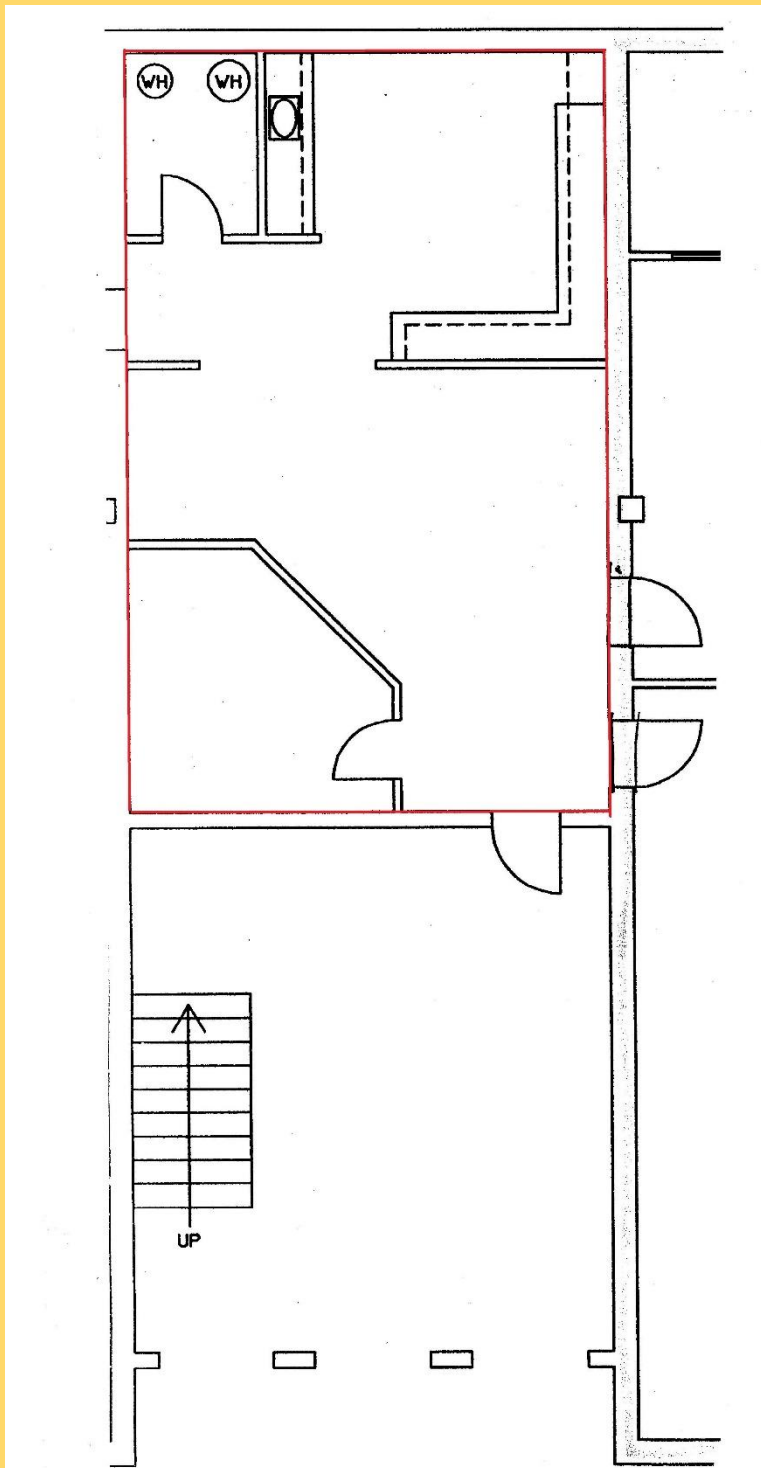
Phone: 803-799-5005

Fax: (803) 799-5070

[info@robindialrealestate.com](mailto:info@robindialrealestate.com)

2712 Middleburg Drive  
Suite 208  
Columbia, SC 29204

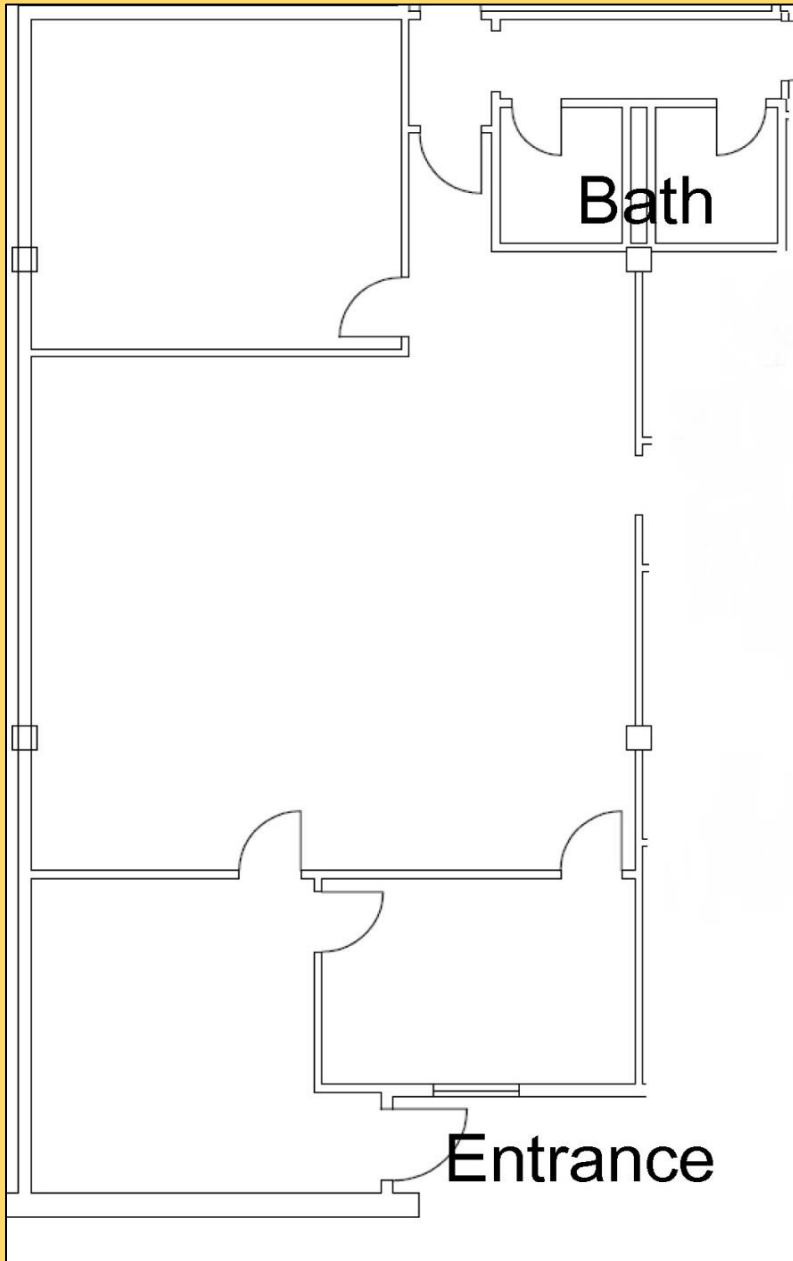
# Suite 103.5 907 sq. ft.



Executive Office  
w/ Reception Office  
& Kitchen

\$907.00/month  
Janitorial, Power,  
Water/Sewer, and  
Maintenance Costs All  
Included

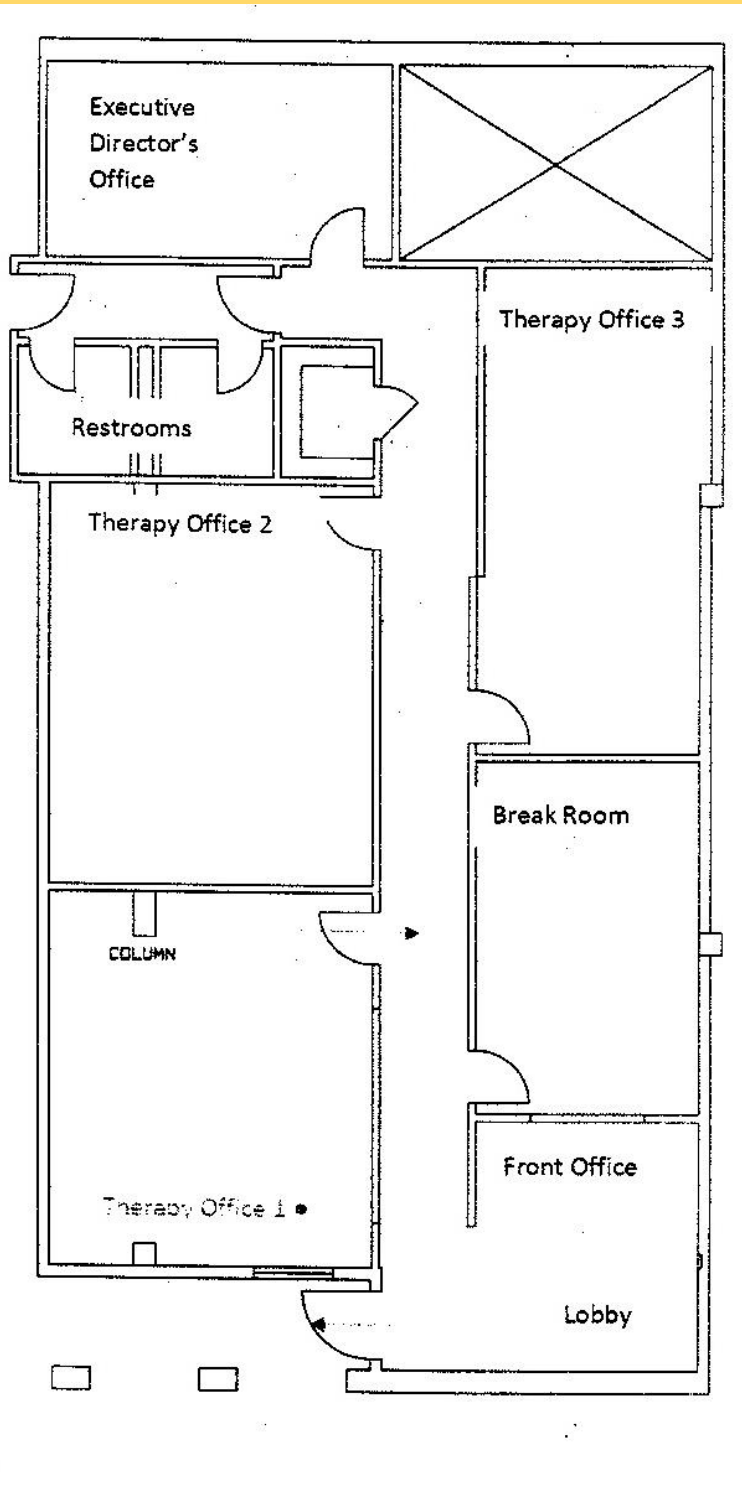
# Suite 102 1,222 sq. ft.



Three offices  
Reception Area  
Conference Room  
Common  
Bathrooms

\$1,222.00/month  
Janitorial, Power,  
Water/Sewer, and  
Maintenance Costs All  
Included

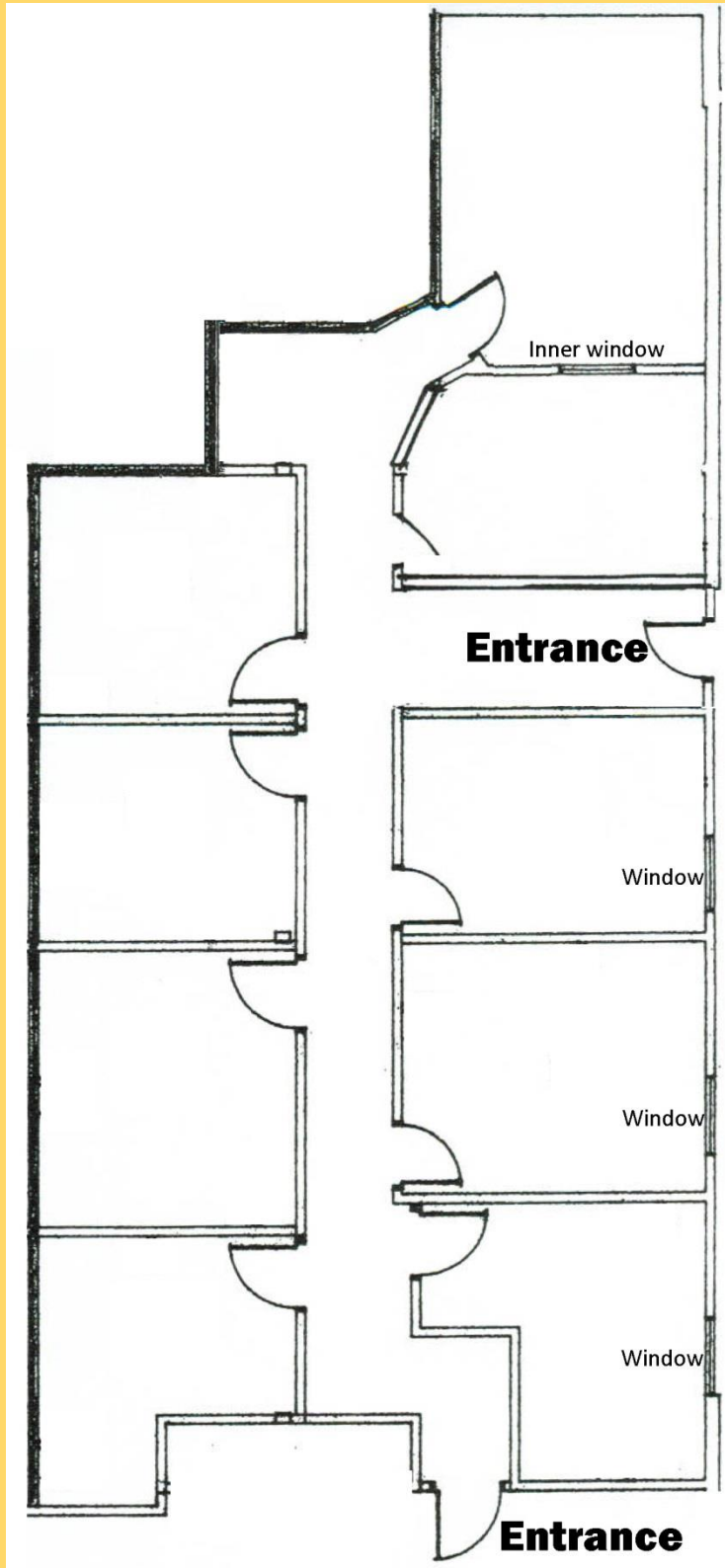
# Suite 105 1,585 sq. ft.



Five Offices  
Reception Area &  
Lobby  
Common Restrooms

\$1,585/month  
Janitorial, Power,  
Water/Sewer, and  
Maintenance Costs All  
Included

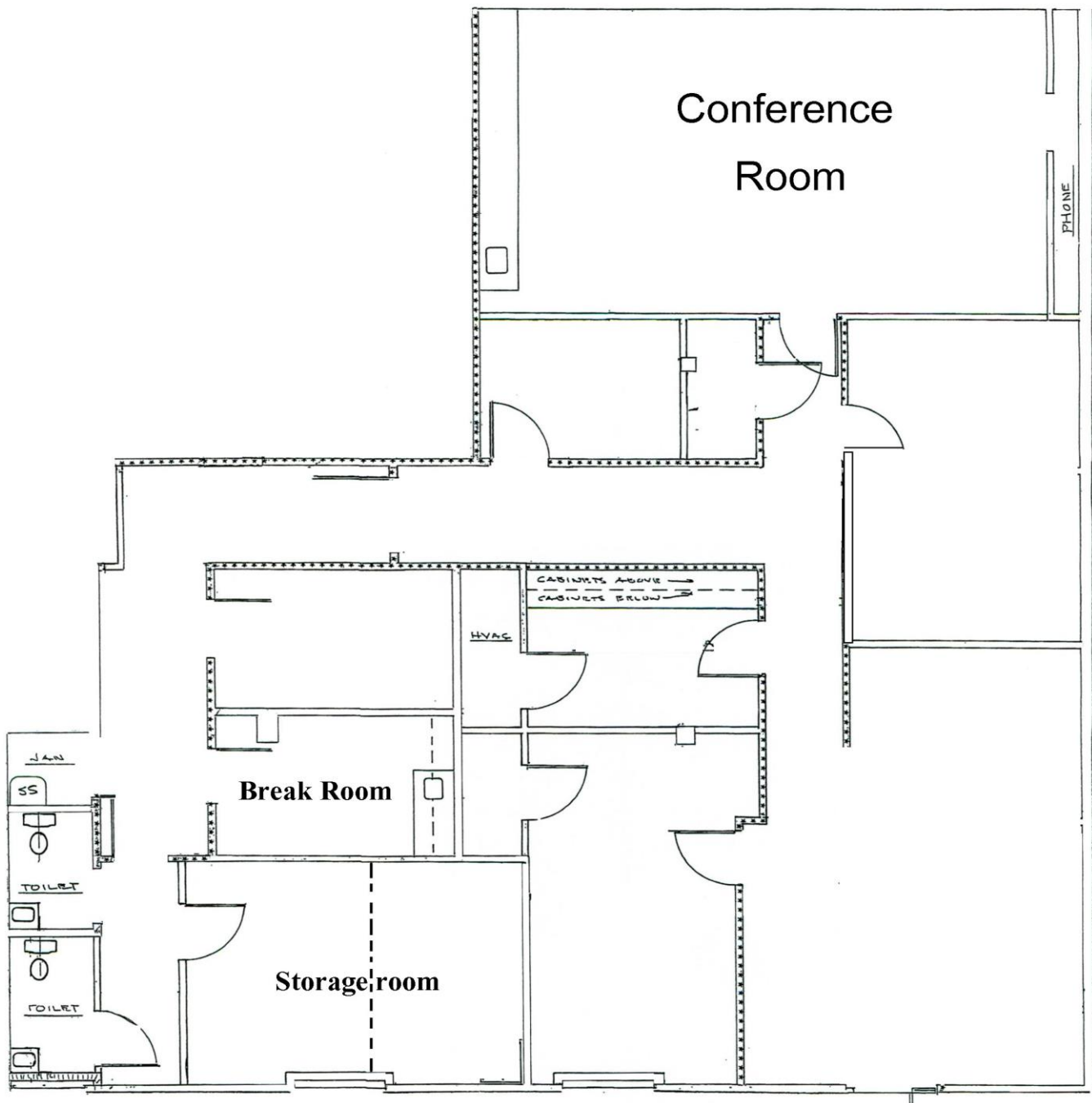
# Suite 207A 1,730 sq. ft.



Nine offices  
Conference Room  
Storage/Filing Room  
Common Bathrooms

\$1,730.00/month  
Janitorial, Power,  
Water/Sewer, and  
Maintenance Costs All  
Included

# Suite 108 2,818 sq. ft.



Six offices  
Conference Room  
Parking  
Private Bathrooms

\$2,818.00/month  
Janitorial, Power, Water/Sewer,  
and Maintenance Costs All  
Included